

Location-Aware Process Recovery via Petri Net Learning

The First Inter-University Symposium on Field Based Design
- Ph.D Student Forum

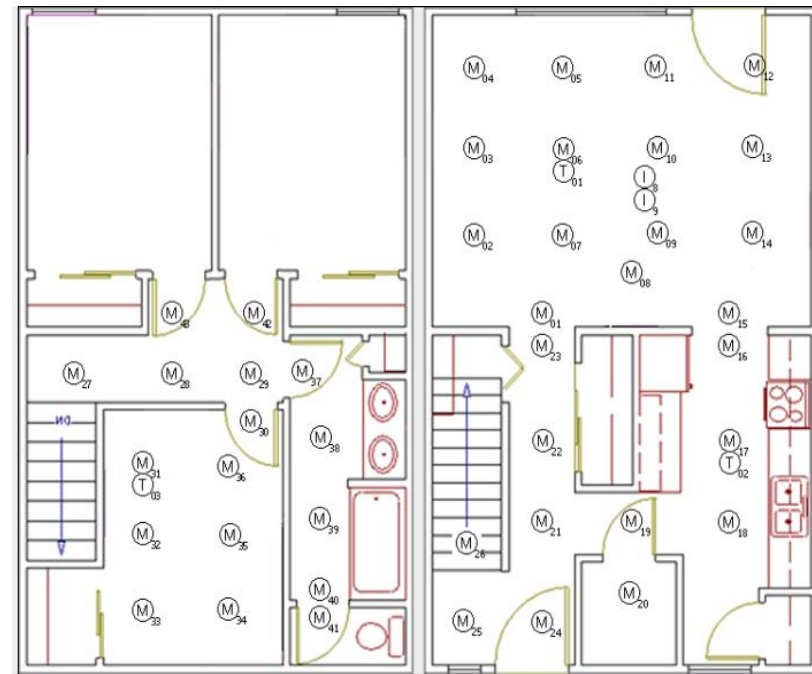
March 30, 2013

Chen LI

Department of Computer Science
Hong Kong Baptist University

Motivation

- The pervasive **sensing** technologies found in **smart houses** offer unprecedented opportunities for providing health monitoring and assistance to individuals experiencing difficulties living independently at home.



Motivation (cont.)

- If we treat human behaviors in smart houses as produce items in the factories.



- Sequential
- Parallel
- Exclusive



Background of Process Mining

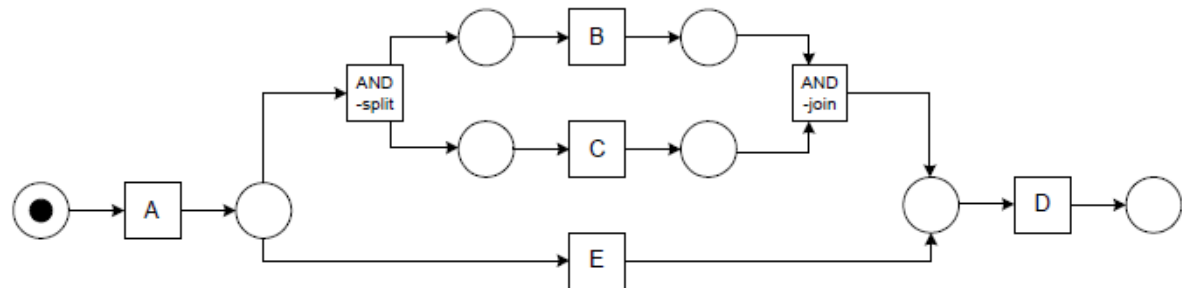
- Process mining is to automatically determine and analyze actual process execution – How the processes are performing in a complete new and process oriented way.
- The basic idea behind Process Mining is to extract knowledge from event logs recorded by systems.

Back ground of PM (cont.)

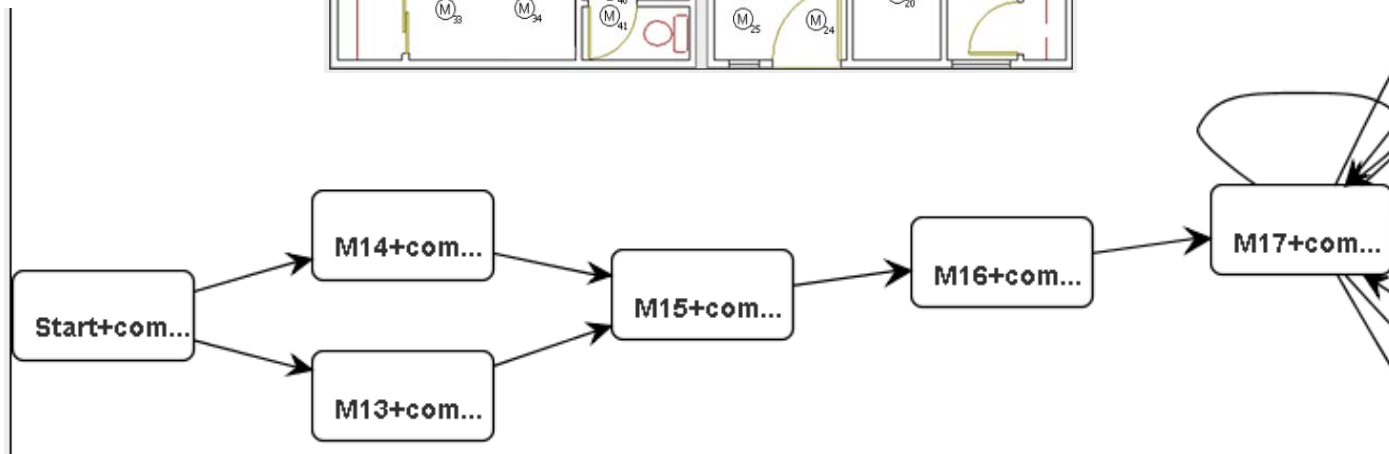
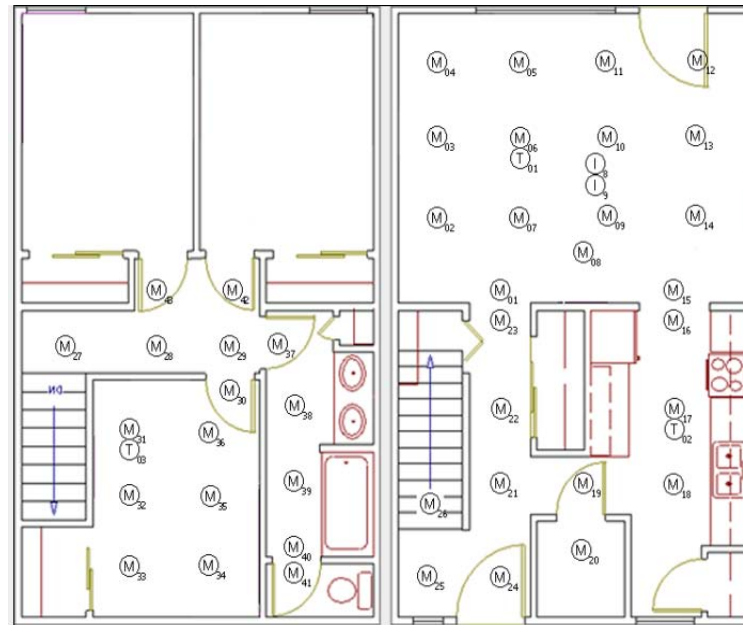
Patient ID	Treatment ID
1	A
2	A
3	A
3	B
1	B
1	C
2	C
4	A
2	B
2	D
5	A
4	C
1	D
3	C
3	D
4	B
5	E
5	D
4	D



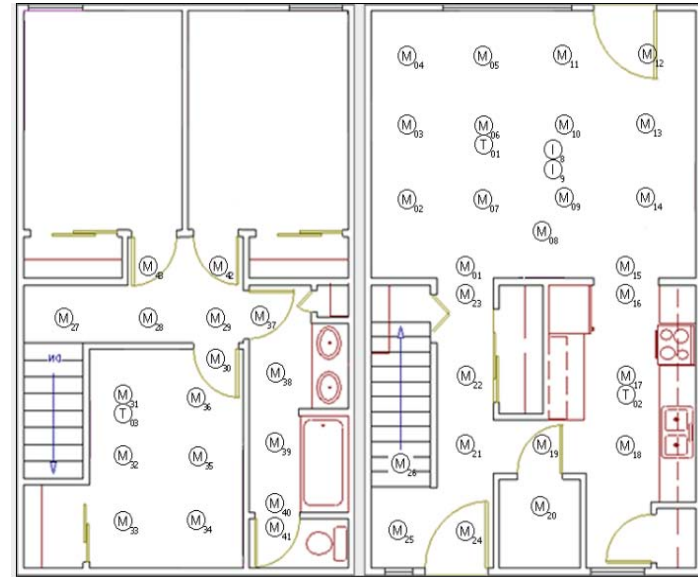
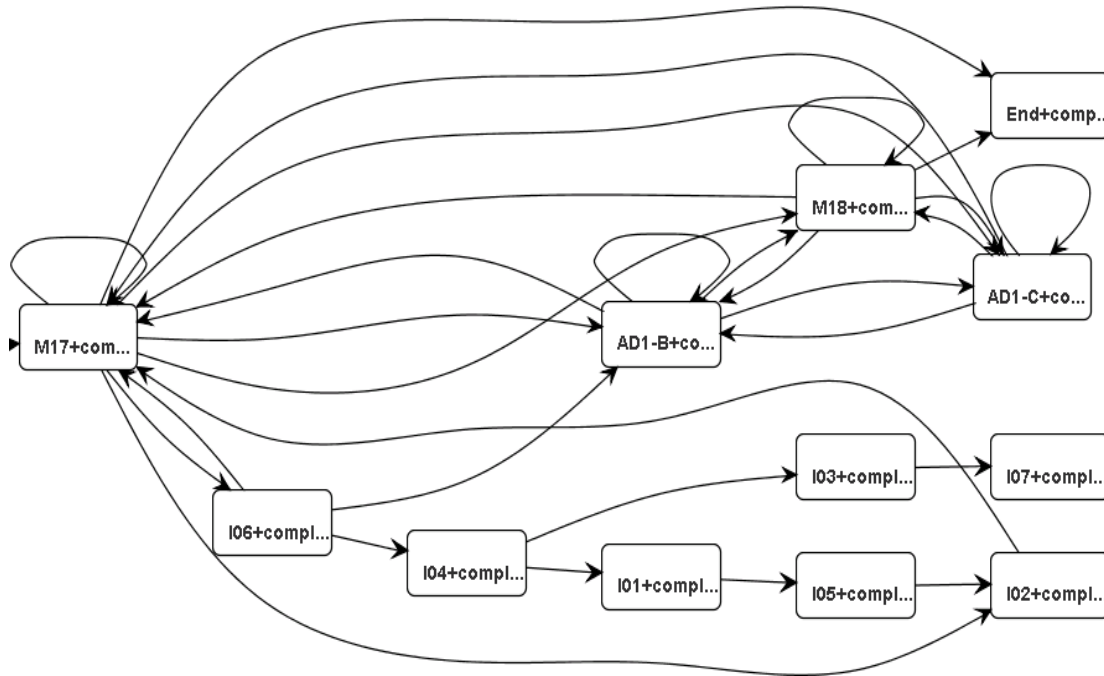
Patient 1: ABCD
Patient 2: ACBD
Patient 3: ABCD
Patient 4: ACBD
Patient 5: AED



Example



Example (cont.)



Problem 1 Data Sources

```
2008-02-27 13:01:59.731257 M14 ON
2008-02-27 13:02:01.768668 M13 ON
2008-02-27 13:02:01.904702 M14 OFF
2008-02-27 13:02:03.610236 M13 OFF
2008-02-27 13:02:18.144571 M14 ON
2008-02-27 13:02:18.339518 M13 ON
2008-02-27 13:02:21.935527 M13 OFF
2008-02-27 13:02:26.979782 M15 ON
2008-02-27 13:02:27.65459 M16 ON
2008-02-27 13:02:29.167161 M17 ON
2008-02-27 13:02:29.78498 M15 OFF
2008-02-27 13:02:30.855689 M14 OFF
2008-02-27 13:02:31.460564 M16 OFF
2008-02-27 13:02:33.228621 M17 OFF
2008-02-27 13:02:33.506643 M17 ON
2008-02-27 13:02:35.44078 M17 OFF
2008-02-27 13:02:40.436585 M17 ON
2008-02-27 13:02:43.448725 D01 OPEN
2008-02-27 13:02:48.940119 M17 OFF
```



Patient ID	Treatment ID
1	A
2	A
3	A
3	B
1	B
1	C
2	C
4	A
2	B
2	D
5	A
4	C
1	D
3	C
3	D
4	B
5	E
5	D
4	D

Problem 2 Missing Data

Patient ID	Treatment ID
1	A
2	A
3	A
3	B
1	B
1	C
2	C
4	A
2	B
2	D
5	A
4	C
1	D
3	C
3	D
4	B
5	E
5	D
4	D

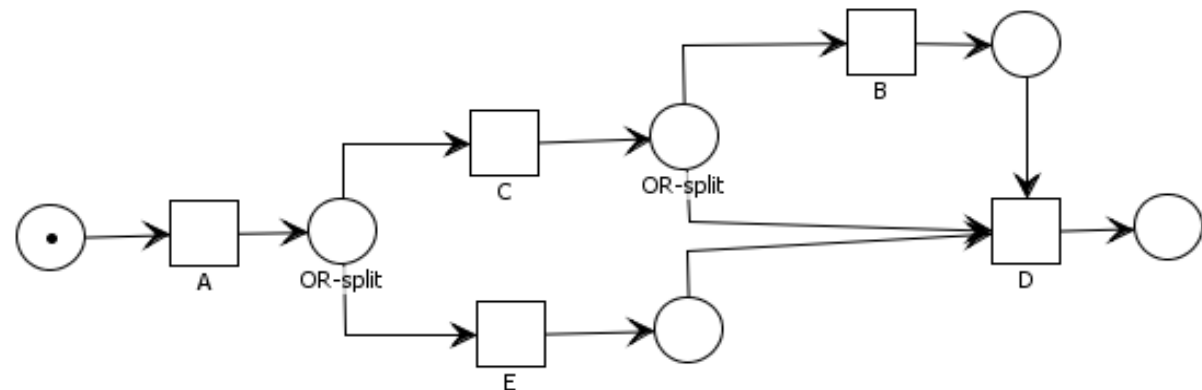
Patient 1: A~~B~~CD -> ACD

Patient 2: ACBD

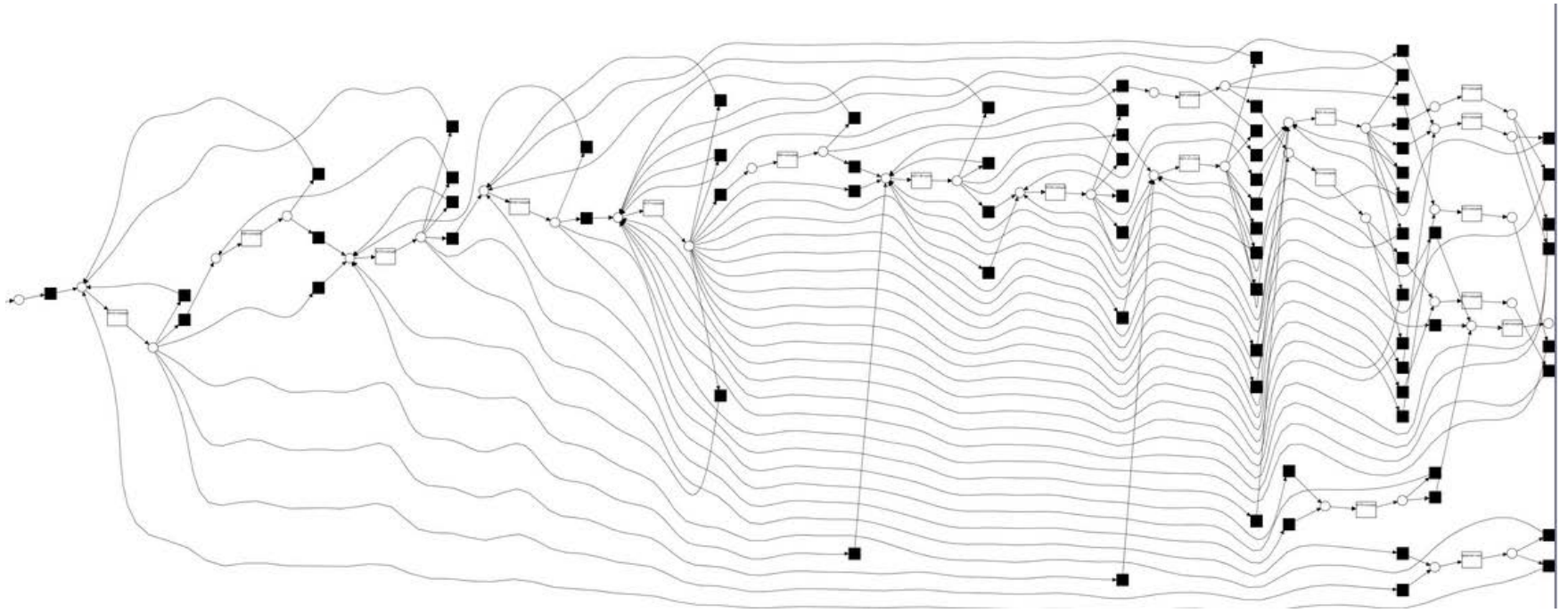
Patient 3: A~~B~~CD -> ACD

Patient 4: ACBD

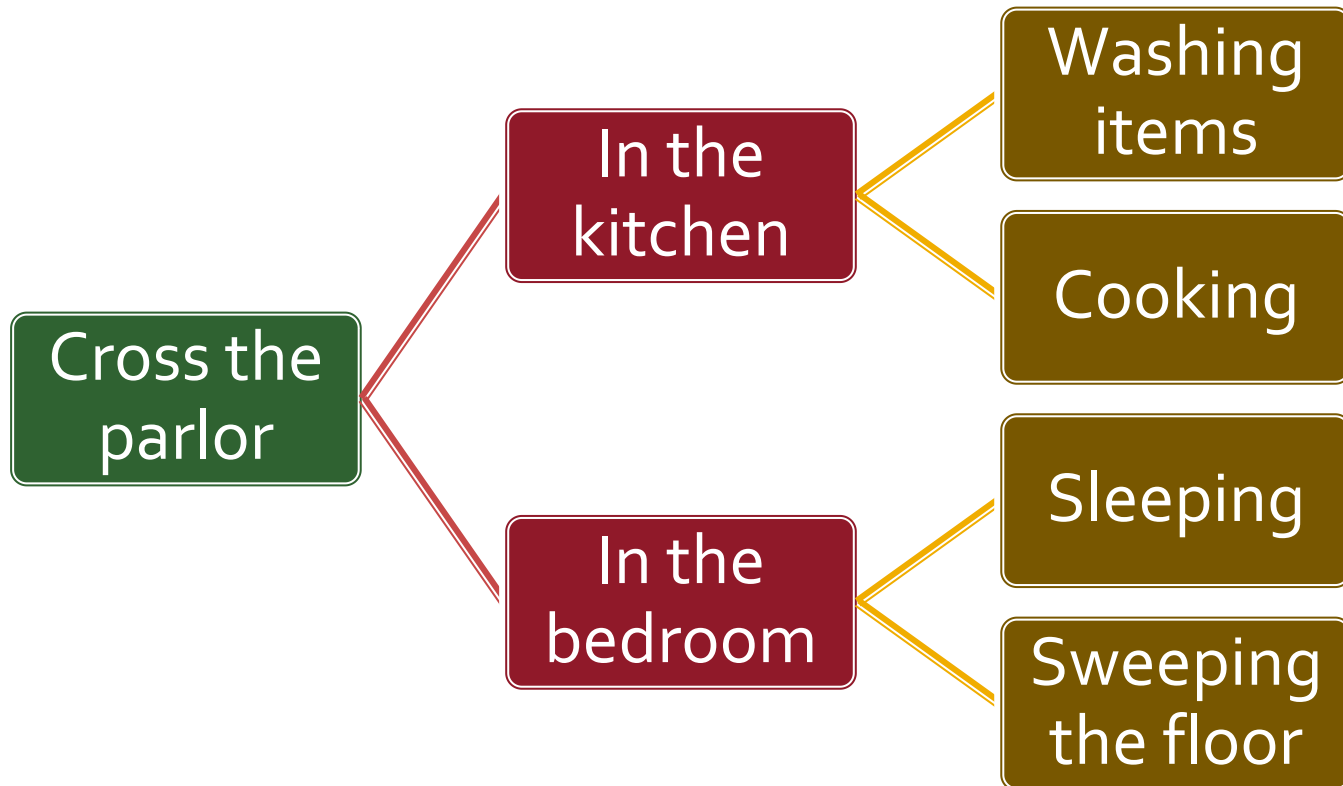
Patient 5: AED



Problem 3 Granularity



Problem 3 Granularity (cont.)

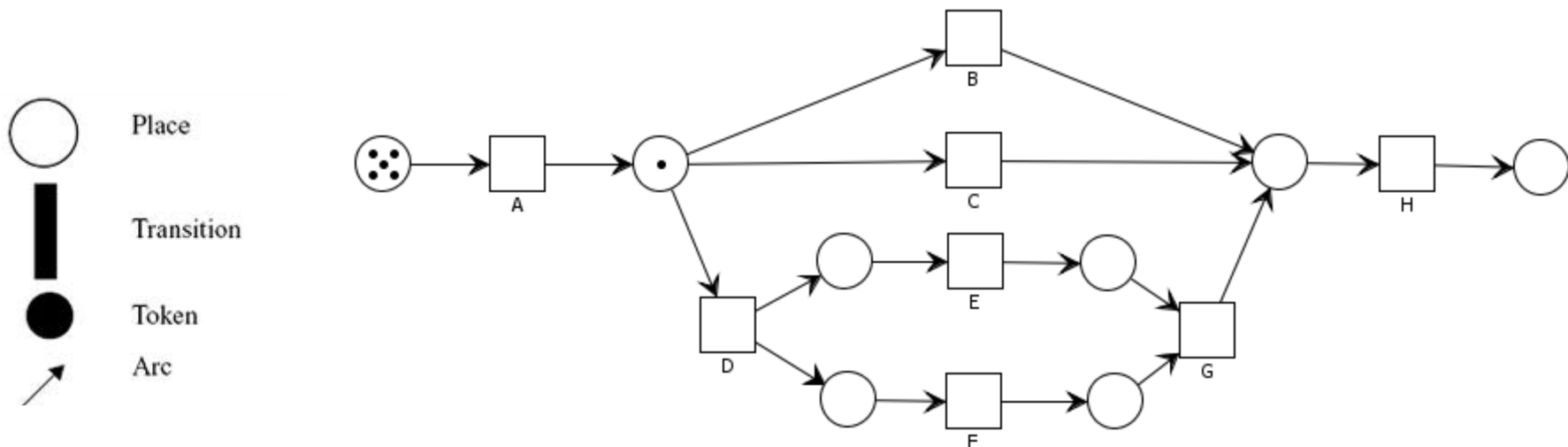


Literature Review

- There are several techniques that are used to perform process mining such as:
 - α algorithms (van der Aalst et al. 2004)
 - Genetic algorithms (Alves de Medeiros et al. 2007)
 - Heuristic mining (Weijters and vander Aalst 2003)
 - Fuzzy mining (Gunther and van der Aalst 2007)
 - Region-based approaches (van Dongen et al. 2007, Sole and Carmona 2010, etc.)
 - Mining interleaved data (Jian-Guang Lou et al. 2010)
 - Mining unlabelled data (Ferreira and Gillblad 2009)

Future work

- Introduce **Location** information
- Use **Stochastic** model
- Via **Petri net** learning
 - Simple
 - Powerful



Thank you!

